

**Weald of Kent
Grammar School
Sixth Form**



**Information for Prospective
Students and Parents**

Contents

Welcome from the Director of Sixth Form	3
---	---

Sixth Form Study

The Sixth Form Curriculum	4
Enrichment & EPQ	5
Making Informed A Level Choices	6
Independent Study, Induction and Facilities	7

Support and Guidance

Pastoral Care and Reporting	8
University Guidance	9
Oxbridge, Medicine, Dentistry and Veterinary Science and Careers Advice	9

Sixth Form Opportunities

Leadership and Student Council.....	10
Extra-curricular Opportunities	11
Events and Visits	12

Applying for the Sixth Form

Application Process	13
Subject Criteria for A Level Courses.....	14



Weald of Kent Grammar School

Sixth Form

Welcome to Weald of Kent Grammar School. This booklet is designed to give you a flavour of life in the Sixth Form here and to support you through making your subject choices.

Weald of Kent Grammar School enjoys a well-deserved reputation for academic excellence alongside the provision of first-class care, guidance and support. We offer a wealth of enrichment, extra-curricular and leadership opportunities to our Sixth Form students to enable them to develop into curious, confident and caring individuals with first-class qualifications, a strong sense of responsibility, integrity and self-esteem, the courage to take risks and the skills to lead others in shaping the future.

It is a privilege and a pleasure to be the Director of Sixth Form of such a vibrant, purposeful and inclusive learning community where all students are valued as individuals. When you join us in the Sixth Form, whether your route has been through the Weald of Kent main school or you have chosen to come from elsewhere, you will find your days academically challenging and intellectually stimulating. The rigour and demands of your lessons and independent learning opportunities are exceptionally well supported by our caring and friendly atmosphere. Students here at Weald are welcoming, approachable and supportive of one another, keen to make the most of the wide variety of opportunities that are available to them and to lead or contribute to the wider life of the school as well as acting as role models to the younger students.

We hope that, after reading this prospectus, you will have all the information to decide that Weald of Kent Grammar School would provide a wonderful opportunity for your Sixth Form education, but if you have any further questions then we will be happy to answer them. Should you require additional information about the Sixth Form, or the admissions process after this evening, please contact us via admissions@wealdgs.org

I look forward to seeing you in the future.

Mrs B Swaffer
Director of Sixth Form

Sixth Form Study

The Sixth Form Curriculum

Weald of Kent offers a wide range of subjects that allows students to make a variety of choices that suit their needs. All A levels now have a fully linear structure with all examinations taking place at the end of the course after two years. Weald operates a ten-day timetable cycle which means that we divide each term into two-week blocks. In each fortnightly cycle, the normal timetable allocation in both Year 12 and Year 13 is ten one-hour lessons in each main curriculum subject.

At Weald, students in Year 12 will usually opt for three subjects; some students may wish to study four subjects and will be required to meet an additional criterion to do this. All subjects are examined in the summer of Year 13. As part of the curriculum, Sixth Formers also benefit from a tutorial and comprehensive enrichment programme that develops skills to help prepare for life beyond school.

Matilda - Spanish, English Literature, Biology

The Sixth Form at Weald is at the heart of our inclusive school community, where every student is supported by outstanding teachers and surrounded by exceptional peers. The student experience shifts in the sixth form with students benefitting from increased independence and responsibility, prioritising their growth and self-development on top of academic studies. All students have the chance to thrive in a positive learning environment, with opportunities to take on leadership roles and more in order to prepare them in taking their next steps beyond school.



Subject to numbers, staff and timetable restrictions, we intend to offer the following curriculum subjects:

Art	Biology	Business Studies	Chemistry
Computer Science	DT: Product Design	Drama & Theatre Studies	Economics
English Language	English Literature	French	Geography
German	History	Mathematics	Mathematics (Further)
Media Studies	Music	Philosophy	Physical Education
Physics	Politics	Psychology	Sociology
Spanish	Extended Project Qualification		

Enrichment

Sixth Form students follow a programme of enrichment which is specifically designed to support them through their studies, maintain good wellbeing and to prepare them for life beyond school. In Year 12, students follow a curriculum designed to improve their academic, social and emotional development. Students will also receive a series of talks and workshops which draw on performance psychology to help them develop their positive mindset, study skills and performance under pressure. In addition to this, the school's dedicated enrichment days provide students with the chance to develop their independence as well as attending workshops in school on topics such as Drugs Awareness, Sexual Health and Safe Driving. In Year 13 these enrichment days focus on supporting students in their preparations for higher education and life beyond school, for example through an Interview Practice Day as well as preparation for independent living with sessions on budgeting, finance, student accommodation, first aid and menu planning.

Extended Project Qualification

Alongside their A Levels, Year 12 students can choose to study for the EPQ: a project or dissertation that students research, write and present on a topic of their interest and choosing. The qualification allows students to develop a wide range of skills including planning, time management, research, analysis and evaluation. It also provides them with the opportunity to produce a carefully structured piece of extended work (similar in length and form to an undergraduate dissertation) which they then present to an audience.

Phoebe - Business Studies, History, Mathematics

At Weald, Sixth Form students' approach to learning becomes deeper and more independent as the focus shifts towards fostering independence and critical thinking. With smaller class sizes and increased student autonomy, there are more opportunities to gain a deeper understanding of their chosen subjects and explore passions further. Teachers are seen more as mentors guiding students through advanced subjects, with a more collaborative and interactive style of teaching. Students are encouraged to engage in lively discussions, research projects and more self-directed learning. The 2 years of learning within sixth form at Weald is overall a time of growth and self-discovery with the support of teachers, to ultimately prepare for the next step whether that is university or apprenticeships.



Making Informed A Level Choices

Choosing subjects for A Level study can be a tricky process. Some subjects are significantly different at a higher level in both content and assessment pattern; other subjects are completely new at A level. The purpose of our guidance programme, including this booklet, is to provide information about the subjects and specifications to help you make an educated choice. Staff will of course be happy to discuss in more detail about their subjects.

All subjects are a possibility – At Weald we strongly believe that all subjects are valuable in their own right and students should opt for subjects that they have a genuine interest in above all other considerations as they are more likely to flourish at A Level. There is also an opportunity for students to take a broad variety of subjects, for example taking a humanities or language alongside two sciences and this should be particularly considered for students who wish to keep their options open. Students will need to consider whether their choices meet the needs of any career aspirations they may have. Overall, students should consider the following:

1. Choose what you enjoy

This is crucial as enjoyment and examination success go hand in hand. Students will find self-motivation much more of an issue if they take a subject that they do not find interesting and exciting.

2. Great grades follow great choices

By opting for a subject which you are excited to study, you are more likely to succeed. Alongside this, students should consider what they are good at, without being overly influenced by just one examination result e.g. a GCSE mock. Instead, they should reflect over the last two years to get the best indication as to their likely success in each subject.

3. Future career or university choice

For most careers, any combination of A Levels is appropriate, however if you have a particular vocational career ambition, then it is always worth checking university entry requirements using the UCAS website.

Zara - English Literature, English Language, Politics, History

A-level education at Weald is championed by the combination of lessons, teaching support and super-curricular activities. Weald has created a system of teaching and learning that encourages students to be independent thinkers, whilst welcoming them into an academic community of insightful learning and successful results. Lessons are informative and highly engaging with both the accessible and challenging topics inciting insightful discussions and the super-curricular opportunities branch out to cover all areas of possible student interests.



Independent Study

Our aim is to develop all of our students as independent and lifelong learners. Teachers will always look to promote knowledge and understanding that takes students beyond the confines of the examination specification. We carefully manage the transition from the highly structured nature of Year 11 in preparation for Higher Education and beyond, and students will have non-contact study periods alongside taught lessons. Students are expected to use these study periods constructively and wisely to support their academic studies. Much of this work will be self-directed and will involve wider reading, research and note-taking; skills that are essential at this level. Students are expected to devote around ten hours per week outside of lesson time to each of their subjects. This equates to students being expected to spend an hour on independent study for every hour of teaching they receive.

Induction

To support and carefully manage the transition from GCSE as well as prepare students for the Sixth Form, all students go through a detailed and extensive induction programme. This includes two induction days, the first of which in June focuses on the academic aspects of the Sixth Form and how best to prepare for A level study. The September Induction is focused more on expectations of life in the Sixth Form as well as learning to work as a team. The autumn term PSHE programme for Year 12 students focuses on the skills needed to be successful at A Level. There is also a Year 12 BBQ and social at the end of the first couple of weeks which is aimed at team building and encouraging students to make new friends. In addition, there is an evening for parents/carers to learn how best they can support their daughter throughout the next two years and this event also offers an opportunity to meet with form tutors and senior staff.

Facilities

Weald is fortunate in having excellent facilities that enable us to deliver a high-quality learning experience for all students. The school enjoys well-equipped science labs, dedicated technology and music blocks and IT suites allowing us to give students access to modern computers. We have a drama studio and well-resourced art rooms.

Our school library allows students access to a wealth of resources. Our Sixth Form Hub includes a common room as well a large Sixth Form study area, equipped with high quality IT provision for independent study. There is also our Sixth Form café providing food and refreshments throughout the day and providing a university style environment. This ensures that Year 12 and 13 students have the space and facilities to study productively in their study periods and ensure that life in the Sixth Form feels very different from life in the main school, allowing students to study effectively outside lessons and still socialise with their friends. Our sports facilities are first class. A sports hall was built in 2015 which has allowed us to develop further the sporting opportunities for our students. We also have large tennis and netball courts. Alongside this we have a large school field which is used for both Sixth Form Sport and as a social space.



Support and Guidance

Pastoral Care

Each student in the Sixth Form is allocated to a tutor group with an experienced form tutor who is dedicated to supporting them through their A level studies and has an excellent knowledge of the UCAS system used for university applications. There is time at the start of every day for the tutor to meet the form during the registration or assembly period.

Each year group has a Head of Year whose role is to manage the tutor team for their year group and an Assistant Head of Year whose role is to provide additional one-to-one mentoring and support to students. They also play a vital role in the monitoring of students to ensure that appropriate support is given and provide a vital link for parents. Our Careers Manager and Independent Careers Advisor all ensure students have access to a wide range of people and expertise. Our aim is to make sure students are well supported in order to achieve to the best of their ability and make the most of the opportunities on offer to them. Each fortnight students participate in several assemblies: a year group assembly and an assembly run by a member of the Senior Leadership Team. Alongside this they have a programme of tutorial activities that help their development as individuals and as a member of their form.

To further support the pastoral care of students we have our Student Services Team which includes a school nurse, School Counsellor and SENCo. We support students throughout their time at school including managing access arrangements for examinations and emotional health and well-being support.

Willow - English Language, Art, Geography

Here at Weald we are committed to creating a welcoming supportive 6th form environment. We have a wide range of easily accessible pastoral support available to students such as our friendly staff at student services and our student led peer mentor scheme. We are a school where students are encouraged to be confident expressing themselves and also comfortable to reach out and talk to someone if they need support.



Reporting

Regular monitoring of progress and feedback is of vital importance so reporting takes place every full term. Individual reports, which measure the student's progress throughout their studies, are shared with parents and this data is tracked closely by Heads of Year, form tutors and subject departments. If at any time there are concerns, parents will be invited into school to discuss the situation for, although we appreciate that students develop greater independence whilst in the Sixth Form, we do value and encourage the support that parents can provide.

University Guidance

We provide an extensive and comprehensive UCAS guidance programme to support students in their choice of university and course which draws on the expert knowledge of the Sixth Form team. Information evenings are held for students and parents to take them through the process, provide an update on any new developments and to answer any questions you may have. Students attend the UCAS event in London to receive information from many universities about higher education. There is a Higher Education Day in Year 12 where University Admissions Tutors talk about personal statements, choosing courses, completing the UCAS form and preparing for interviews. As a result, nearly all of our students are successful in obtaining a place at one of their chosen universities, with over three quarters of students gaining a place at their first-choice university and proceed onto high quality universities and higher education institutions when they leave us in Year 13.

Oxbridge

Any students aspiring to apply for a place at Oxford or Cambridge are supported through an extensive programme overseen by our Oxbridge Coordinator. Support includes a meeting with an Admissions tutor, discussion groups specific to a students' chosen subject and weekly meetings with the Oxbridge Team. Students also have an opportunity to hone their interview skills in Year 13 with subject specialists to prepare for the academic questions they will be asked.

Medicine, Dentistry and Veterinary Science

We provide a highly supportive programme for any student wishing to apply for Medicine, Dentistry or Veterinary Science. This includes thriving and highly successful Medical and Dentistry Societies which help support students with their applications. Support includes a meeting with an Admissions tutor, interview practice with subject specialists and weekly meetings with the Medics Team.

Careers Advice

Careers and Work-Related Learning is a key part of our Sixth Form provision. All Year 12 and 13 students have the opportunity to have a one-to-one session with our independent careers advisor who can give personalised guidance regarding university and career path choices. Year 12 undertake a week of work experience in the summer term to help inform their higher education choices. In addition to this, the school has a comprehensive higher education programme which includes attending a HE convention, mock interviews, support through the UCAS application process and taster lectures delivered by universities.

Asher – Politics, Biology, Media Studies

Within Weald Sixth Form, the support and guidance are unlimited, such as external guidance from companies assisting university applications and experienced form tutors and UCAS team. We are fully prepared for our next step beyond the sixth form with the wide range of advice we receive, preparation for applications and interviews and opportunities beyond the curriculum.



Sixth Form Opportunities

Leadership

The Sixth Form is an integral part of the Weald community and students are important role models for the rest of the school. This contact with the younger members of our community is highly valued and immensely rewarding. During the fourth term of Year 12, students can apply for the prestigious position of Senior Prefects. These students take up office in the Summer Term of Year 12 and commit to a highly visible and responsible position in the school's leadership with prefects having responsibility for different pillars: Charity; Community; Societies; Sport and Creative Societies; Inclusion; Curriculum. The team includes the Head Student and Deputy Head Student who meet each week with the Director of Sixth Form, act as ambassadors for internal and external events as well as other duties. As a highly visible presence around the school, Sixth Formers are expected to reflect the highest standards of conduct and set an example to the younger years.

Alongside the Senior Prefect team, there are additional Sixth Form Prefects who are selected for their passion and commitment to the school. Their duties include mentoring younger students, supporting academic departments and helping with open evenings. Form Ambassadors attend school council meetings, act as mentors to the younger students and run events for the whole school.

Student Council

Overseen by the Head and Deputy Head Students, the school council comprises of representation from all year groups, led by Year 12 Form Reps. They meet each term to discuss improvements in the school, driving change through student voice. Being a student council representative is leadership role at Weald, where students take responsibility, represent their form and year groups and create a strong link between students and staff.



Extra-curricular Opportunities

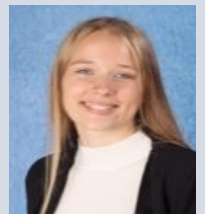
We actively encourage Sixth Formers to get involved with all aspects of the school and the extra-curricular aspect of the Sixth Form is highly valued. There are a wide range of extra-curricular opportunities in the Sixth Form and students are encouraged to set up and run activities, clubs or societies for themselves, either through personal interest or within their departments.

The Duke of Edinburgh Gold Award is offered to students in the Sixth Form providing a great opportunity to challenge themselves and their own personal development. There are a wide range of sporting opportunities available to Sixth Form students via Sixth Form Sport, where students can play netball, rugby, football, rounders and the ever-popular benchball.

There are also a wide range of academic clubs and societies which are often run and led by Sixth Formers, including the school magazine. Students also enjoy taking part in charity events which the Sixth Form lead. There is also an annual Sixth Form Entertainment in which Sixth Formers create a presentation for the whole school to watch. There are numerous trips in the Sixth Form together with the opportunity to complete the prestigious Gold Duke of Edinburgh Award.

Cat - Geography, Philosophy, Economics

The extra-curricular opportunities available in the sixth form at Weald are very broad. From a variety of sports matches and clubs, including sixth form sport every Friday, to helping out the lower school with their subjects that you specialise in at A-Level.



Events and Visits

Alongside the main curriculum, there are many events and visits that run each year providing further opportunities. An example of the experiences our students have had recently is detailed below:

Events	Visits
Year 12 Induction BBQ	Art Galleries
Art and DT Exhibitions	Berlin Trip
Careers Events	British Film Institute study days
Engineering Events	DofE Gold
Independent Living Day	English Language Conference
Interview Skills Day	Literature and Drama trip to Stratford-Upon-Avon
Inspiring Engineers Scheme	French/Art Trip
Media Studies Showcase	Geo Conference
National Apprenticeship Week	Geography Field Trips
Introduction to Oxbridge	Glyndebourne
Oxbridge Preparation Day	Physics Conference
Personal Statement Day	Question Time event
Study Skills Day	Spanish Trip
UCL Medical Sciences Talk	Theatre visits
UK Maths Senior Maths Challenge	UCAS Discovery London
Work Experience	Media Studies London Residential Trip
Year 12 Science Conference	Music Concert
Young Driver	Physical Education Sports Science Lab Trip
Year 13 Prize Giving	Physics and French trip to France
Year 13 Prom	Women in Leadership Conference



Applying for the Sixth Form

Application Process

Internal Students

All internal students will be offered a place in the Sixth Form, subject to them meeting the entrance requirements. To make their subject option choices students should complete their Application form and submit it no later than **Friday 9th February 2024**.

External Applicants

Students not at Weald of Kent Grammar School should apply for a place using the online form via our website in the Sixth Form area.

Applications open on 15th November 2023 and close on 15th January 2024. Applications will reopen on GCSE results day 2024. Students applying at this point will be placed on a waiting list.

Places will be offered from GCSE results day onwards. Please see our Admissions Policy on the school website for more details.

Entrance Criteria to the Sixth Form from September 2024

The minimum requirement for entry to the Sixth Form at Weald of Kent Grammar School is an average point score of 5.5 over their best eight GCSE subjects and a grade 5 in English Language or English Literature and GCSE Mathematics. Please see our Admissions Policy and our Sixth Form Curriculum Guide for more information.

Subject Criteria for A Level Courses

Subject	Exam Board	Minimum Criteria	Subject	Exam Board	Minimum Criteria
Art	AQA	Grade 6 in GCSE Art or portfolio seen (if GCSE Art not taken)	History	AQA	Grade 6 in GCSE History
Biology	Edexcel (Salters Nuffield)	Grade 7 in Biology or Grade 77 in GCSE Combined Science	Mathematics	Edexcel	Grade 7 in GCSE Mathematics
Business	Edexcel	Grade 6 in GCSE Business or Grade 6 in English Literature/Language (if GCSE Business not taken)	Media Studies	OCR	Grade 6 in GCSE Media Studies or Grade 6 in GCSE English Literature/Language (if GCSE Media Studies not taken)
Chemistry	OCR Specification A (H432)	Grade 7 in GCSE Chemistry or Grade 77 in GCSE Combined Science	Modern Languages (French, German, Spanish)	AQA	Grade 7 in GCSE of chosen language.
Computer Science	OCR	Grade 6 in GCSE Computer Science	Music	Eduqas	Grade 6 in GCSE Music and minimum of Grade 5/6 standard in both theory and practical examinations
DT: Product Design	Eduqas	Grade 6 in GCSE DT	Philosophy	AQA	Grade 6 in GCSE Religious Studies or Grade 6 in GCSE English Literature/ Language (if GCSE Religious Studies not taken)
Drama and Theatre	AQA	Grade 6 in GCSE Drama or Grade 6 in English Literature/Language (if GCSE Drama not taken)	Physical Education	AQA	Grade 6 in GCSE Physical Education and must compete in sport at club level.
Economics	Edexcel	Grade 6 in GCSE Mathematics and Grade 6 in GCSE English Literature/Language	Physics	OCR A	Grade 7 in GCSE Physics or Grade 77 in GCSE Combined Science
English Language	AQA	Grade 6 in GCSE English Language	Politics	Edexcel	Grade 6 in GCSE English Literature or GCSE English Language
English Literature	Edexcel	Grade 6 in GCSE English Literature	Psychology	AQA	Grade 6 in GCSE Biology or Grade 6-6 in GCSE Combined Science and Grade 6 in GCSE English Literature/Language
Further Mathematics	Edexcel	Grade 8 in GCSE Mathematics. *Must be taken alongside A Level Mathematics	Sociology	AQA	Grade 6 in GCSE English Literature or GCSE English Language
Geography	Edexcel	Grade 6 in GCSE Geography			

